



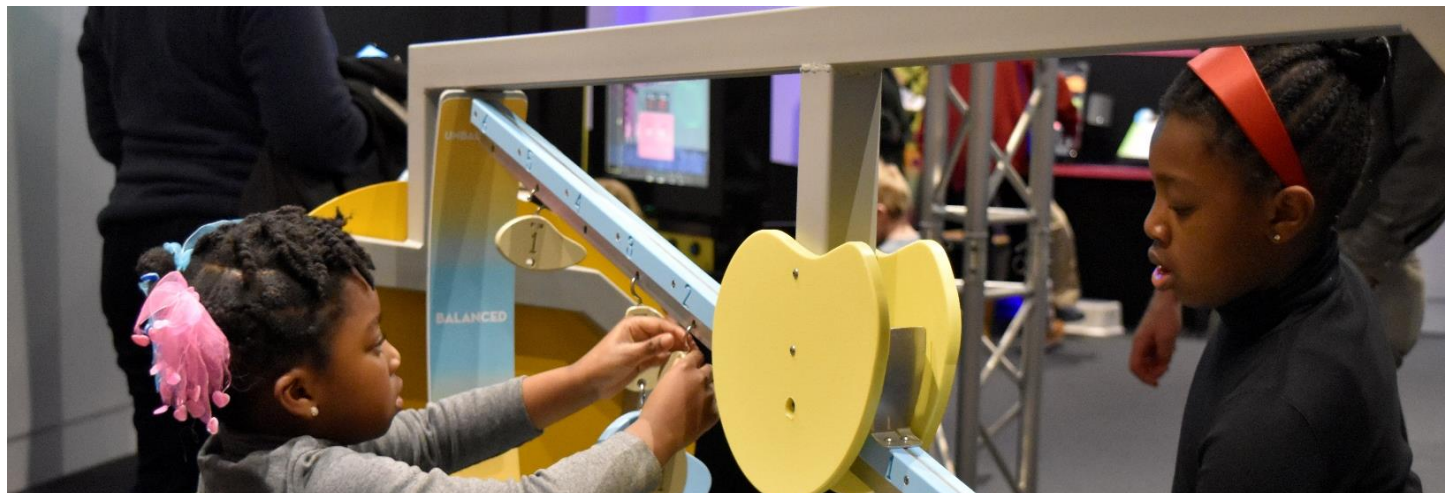
# Delaware Museum of Natural History

Connecting Youth to Urban Waterways





**Nearly 70,000  
visitors in 2019**



**Primary audiences:  
families and school groups.**





# How did COVID-19 affect programs?

- 100+ programs cancelled, primarily in the spring.
- Almost no school and community programming in summer and fall.
- Loss of programming for Title 1 schools.
- Loss of audience at a critical time.



# Building Closure eliminated many resources

- Adapting to new program format without use of the Museum building.
- New staff had to design programs without knowledge of the building or physical resources.





# Adapting through technology

- Designing programs using new interactive touch wall in the Nature Nook.
- Camps, school and community programs, informal education, story times, and animal interactions are virtual.



# Regaining Community Impact

## Grant funding for 2020-2021 to develop programming

- More than \$40,000 from anonymous funder for programming for Title 1 schools.
- \$20,000 from DuPont to produce and implement a series of STEM-based programs for underserved middle school audiences.
- Delaware Teen Science Café is designed for teens by teens with STEAM-related topics.





# Focus on waterways and human connection

## Waterway Rehabilitation

- DuPont-funded programs are career-based, with the intent of informing audiences of possible careers in STEM.
- One program focuses on the Prime Hook marsh restoration project, what was done there, and the skills needed and used.

## Emphasizing human connection

- Closure (due to COVID and for renovation) is opportunity to reevaluate educational methods.



# One huge asset... our collections!







**113,000 Bird specimens**



**Including 36,000 eggs**



**2 million mollusks**



# Scientific Collection – Delaware Shells

**Channeled Whelk**  
*Busycon canaliculatus*



**Common Jingle**  
*Anomia simplex*



**Common Periwinkle**  
*Littorina littorea*



**Atlantic Oyster Drill**  
*Urosalpinx cinerea*



**False Angelwing**  
*Petricolaria pholadiformis*



**Softshell Clam**  
*Mya arenaria*







# Invert E Base

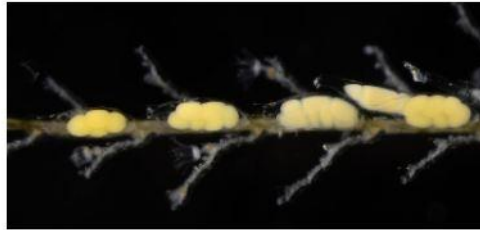
*Reaching back to see the future*

Home Project Information Search Images Inventories Glossaries Associated Projects Log In New Account Sitemap

Welcome to InvertEBase

InvertEBase is a specimen data portal supporting a growing network of natural history collections focused on the study of invertebrate animals, with the exception of terrestrial arthropods. It provides a mechanism for network members to manage, enhance, and share biodiversity data and associated images to scientists and the general public. Most current partner institutions are based in North America but the geographic scope, reflecting the combined collection holdings, is global.

Taxon Search



HIDE CAPTION  
Plumularia setacea; 7959-Cnidaria; Paulay, Gustav 2011-10-03. Image by: Florida Museum of Natural History.



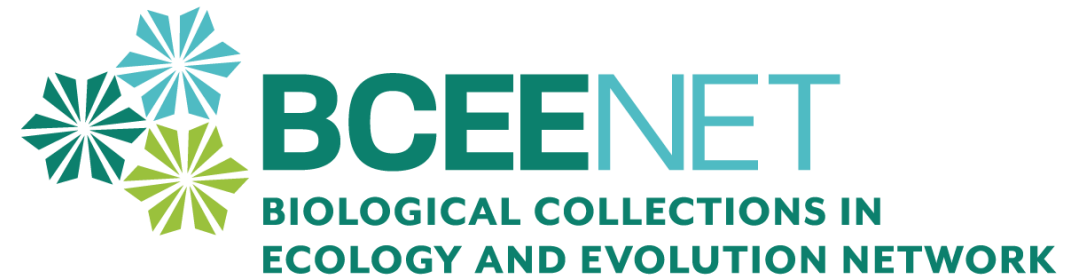
# Digitization makes collections available

- Data can be used by anyone around the world.
- Databases include:
  - InvertEBase.org
  - iDigBio.org
  - Vertnet.org

# Connecting college students and collections



- Gain direct access to scientific specimens
- Real world research experience
- DMNH & Widener University partnership led to BCEENet
- BCEENet reaching students nationwide thanks to National Science Foundation grants.





# Bringing collections to the community



## Traveling science kits (C&D Canal Fossils)





# Discovery



Past



Present



Future

## What's happening in 2021?



**Museum Metamorphosis**  
Connecting Delaware to Our World





DELAWARE MUSEUM  
OF NATURE AND SCIENCE





**Reimagining to become an  
interactive, ecosystem-based,  
engaging experience.**

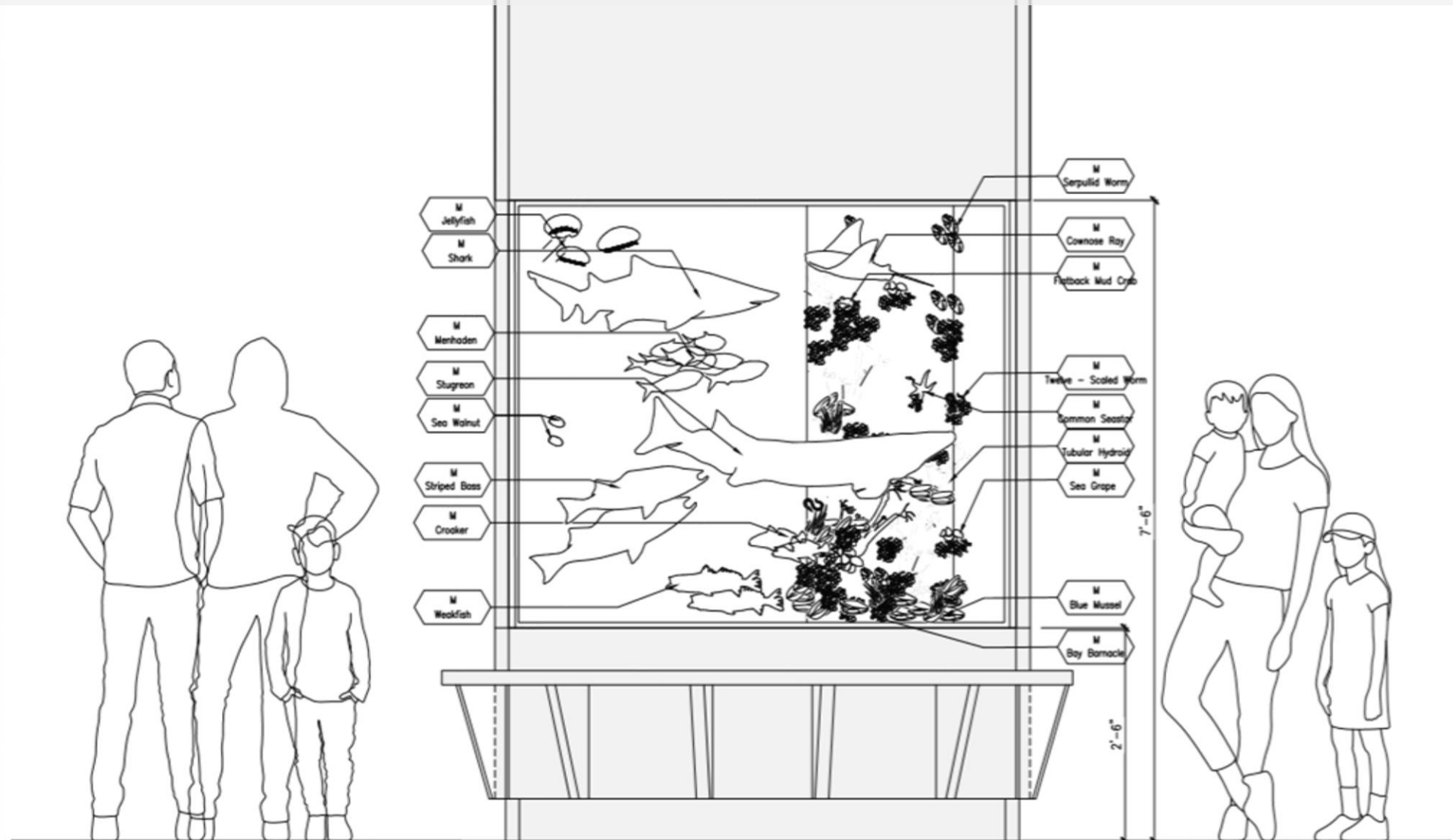


# Delaware Regional Journey Gallery

- Bald Cypress Swamp
- Salt Marsh
- Coastal Dunes
- Delaware Bay
- Temperate Forest



# Future Exhibit – Delaware Bay



1 EXC  
6.7-2.2

ELEVATION

SCALE: 3/4"=1'-0"



# Including the skull from the DE humpback whale





# Incorporating whale skull into Museum updates







# Thank you!



**Delaware Museum  
of Natural History**

**Brendan Pronteau**

School & Community Programs Coordinator

[bpronteau@delmnh.org](mailto:bpronteau@delmnh.org)

**Cathy Perrotto**

Public Engagement Manager

[cperrotto@delmnh.org](mailto:cperrotto@delmnh.org)