

# URBANWATERS

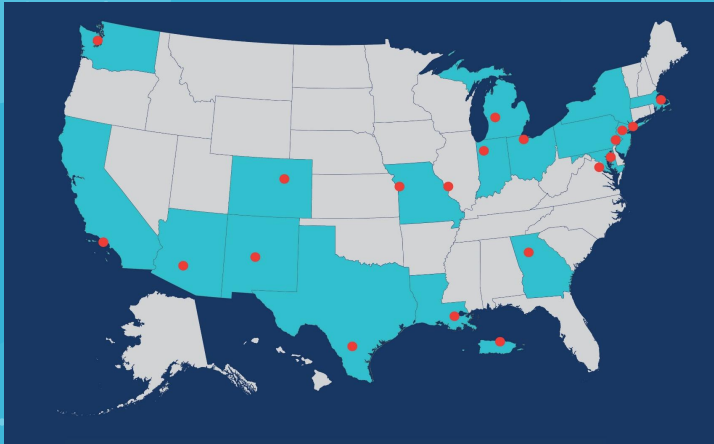
FEDERAL PARTNERSHIP

*Delaware River Location*



2021 Update  
Erica J. Rossetti  
Partnership for the Delaware Estuary

# The Urban Waters Federal Partnership



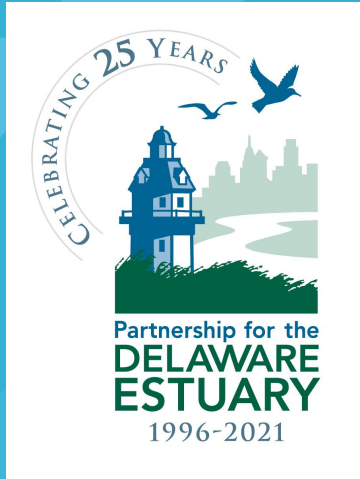
- An EPA EJ program in partnership with 15 federal agencies and 59 NGOs
- Ambassadors at 20 locations
- Local EJ / water equity projects
- Urban Waters Learning Network ([urbanwaterslearningnetwork.org/](http://urbanwaterslearningnetwork.org/))
- Funding sources to support partnerships and local communities ([www.epa.gov/urbanwaterspartners](http://www.epa.gov/urbanwaterspartners))



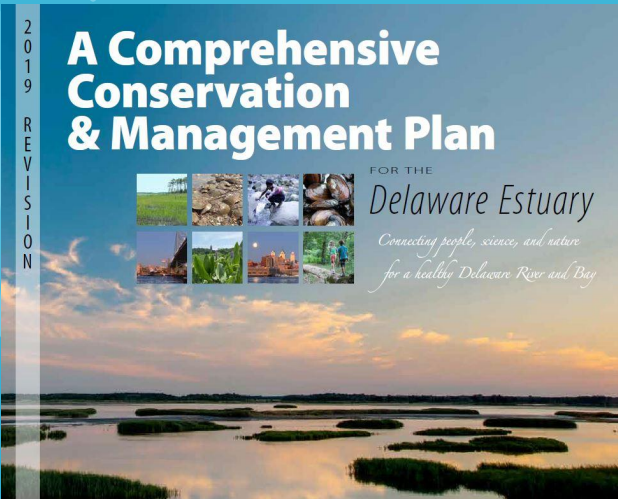
# The Urban Waters Federal Partnership

- **Mission**: To help urban and metropolitan areas, particularly those that are under-served or economically distressed, connect with their waterways and work to improve them.
- **Goal**: Working with a diverse set of partners, help communities restore and protect water quality and revitalize adjacent rural, suburban, and urban neighborhoods throughout the watershed. Leverage the visibility of metropolitan waterways to focus attention and resources on revitalizing whole watersheds encompassing both urban and rural communities.

# UWFP and PDE



- The Delaware Estuary has several large urban areas in our geography
- PDE's 2019 CCMP includes a revised commitment to diversity and environmental justice
- EPA Urban Waters funding fits nicely into NEPs and other work that PDE does
- PDE began to receive funding to host an urban waters ambassador in 2020
- The Delaware River has been a designated UWFP location since 2012

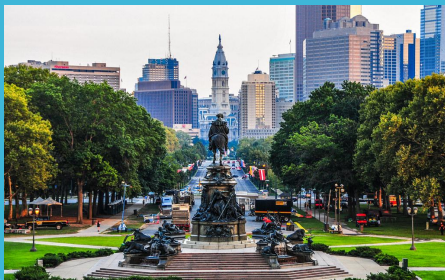






**Camden, NJ**

**Population 74,000**

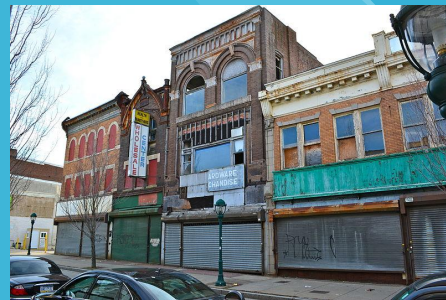


**Philadelphia, PA**

**Population 1.6 million**

**4 cities**

**URBANWATERS**  
FEDERAL PARTNERSHIP  
*Delaware River Location*



**Chester, PA**

**Population 34,000**



**Wilmington, DE**

**Population 71,000**

## **Location Overall Challenges & Goals**

- Stormwater management
- Erosion and flooding
- Source water protection
- Restoring lost habitat
- Enhancing overall waterway health
- Protecting community investments
- Pursuing environmental justice
- Promoting public access
- Large scale focus on advancing small scale on-the-ground implementation

## Recent Accomplishments

Engaging with other watershed professionals

- Participated in Delaware Estuary Science Summit (Jan '21)
- Participated in the Delaware Watershed Forum (Sept '21)

Building relationships with local partners

- Conducting one-on-one “interviews” with urban centers
  - Hoping to continue & offer stipend for their time
- Participating in more local events, including non-environmental community events
  - E.g. Chester River Fest, Camden Environmental Summit

# Recent Accomplishments

## Chester River Festival!

- Incorporated into larger Delaware River Fest
- Met new partners and community members
- 35 tables, dance team, DJ, demonstrations, community garden walkthrough, and ~500 attendees!





# Recent Accomplishments

## Webinar Series 1

1. **Webinar #1 – Learning from Philadelphia, and Connecting to Youth through Shad (11/2/2020)**
2. **Webinar #2 -Voices from Camden, New Jersey: Urban Promise and the Center for Aquatic Sciences (11/10/2020)**
3. **Webinar #3- Connecting with the Delaware Natural History Museum and the Alliance for Watershed Education (11/17/2020)**



# Recent Accomplishments

## Webinar Series 2: Brownfields & Environmental Justice

1. **Webinar #1: Environmental Justice and Urban Waters (3/25/2021)**
2. **Webinar #2: Urban Waters Cities Brownfields Updates (4/1/2021)**
3. **Webinar #3: Environmental Justice Community Initiatives (4/8/2021)**



# Looking Forward to 2022!

- Equitable & Resilient Housing Webinar Series (January 11, 18, and 25)  
[https://us02web.zoom.us/webinar/register/WN\\_1GxELNTJRgyBZK158dSmbw](https://us02web.zoom.us/webinar/register/WN_1GxELNTJRgyBZK158dSmbw)
- Creation of mini-grant program or apply for NFWF grants to supplement community projects in each of the four cities
  - Park projects
  - Pollinator corridors
  - Community gardens
  - Tree plantings
- Partnership building

# Questions?

[erossetti@delawareestuary.org](mailto:erossetti@delawareestuary.org)

(862) 354-2645

[www.DelawareEstuary.org](http://www.DelawareEstuary.org)

CREDITS: This presentation template was created by **Slidesgo**, including icons by **Flaticon**, infographics & images by **Freepik**