

# Delaware Estuary Science & Environmental Summit 2023

## Mentor/Mentee Lunch

### *Mentor Bios*

#### **Anthony Dvarkas**



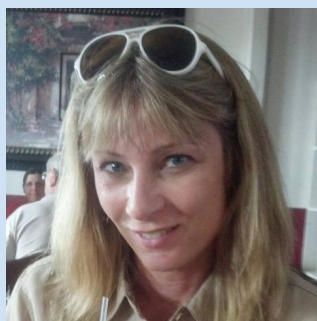
Anthony currently leads Ørsted's strategy for implementing its commitment to a net-positive impact on biodiversity for all offshore North American projects commissioned from 2030. He joined Ørsted from the UN Economic and Social Commission for Asia and the Pacific, where he assisted countries in developing environmental statistics. Previously, he was an assistant professor at Stony Brook University, where he researched ecosystem services integration into coastal planning decisions.

#### **Doug Janiec**

Douglas Janiec is a toxicologist by training and has approximately 35 years of natural resource experience. He specializes in ecological restoration and ecological risk assessment. He has worked both as a private consultant and a federal employee.



#### **Danielle Kreeger**



Dr. Danielle Kreeger is the science director at the Partnership for the Delaware Estuary and an associate research professor at Drexel University. For a scientist with more than 40 research publications, she has navigated a non-traditional employment path, and has diverse experience related to climate adaptation, coastal wetlands, saltwater and freshwater bivalves, and nature-based restoration tactics.

## **Melody Mason**

City Girl now Farmer Queen. Melody was trained by Will Allen in urban Agriculture, Master Gardener, Master watershed steward, Master well owner, teacher, etc. Melody is learning and teaching young people skills that will help them to understand the value in Nature.



## **Jon Miller**



Dr. Miller is a Research Associate Professor of coastal and ocean engineering in the Department of Civil, Environmental, and Ocean Engineering at Stevens Institute of Technology in Hoboken, NJ. Dr. Miller currently serves as the Director of the New Jersey Coastal Protection Technical Assistance Service and the New Jersey Sea Grant Coastal Processes Specialist. Since 2006, Dr. Miller has worked extensively with state and federal agencies, NGOs, and local communities on living shorelines projects at all stages.

## **Raymond Najjar**

Raymond Najjar is a Professor of Oceanography in the Department of Meteorology and Atmospheric Science at The Pennsylvania State University. Dr. Najjar has conducted research on a variety of topics in oceanography, climate science, and hydrology, with current interests focused on how coastal waters are influenced by climate change and pollution.



## **Nivette Pérez-Pérez**



Nivette M. Pérez-Pérez is the Center for the Inland Bays Manager of Community Science. Originally from Ponce, Puerto Rico, Nivette completed her Master's of Science in Natural Resources through Delaware State University as part of the National Oceanic and Atmospheric Administration Living Marine Resources Cooperative Science Center in Dover, Delaware. Before her work at the Center, she held a field technician position with DNREC and the Atlantic States Marine Fisheries Commission and worked as an independent consultant for the Caribbean Fishery Management Council.

## **Julia Rockwell**

Julia Rockwell is a water resources management professional with over a decade of experience working at the Philadelphia Water Department. Julia has a diverse set of experiences at PWD that include serving as a project engineer on the nationally recognized Source Water Protection Program, leading development of a new, department-wide capital planning process, and initiating development and implementation of the Department's Climate Change Adaptation Program (CCAP).



## **John Yagecic**



John has been with the Delaware River Basin Commission for 22 years where he is currently the Manager of Water Quality Assessment. He is a licensed engineer in Pennsylvania, New Jersey, and Delaware. Before DRBC John worked for 9 years for the US Army Corps of Engineers in Chicago, Illinois and Galveston, Texas. He has degrees from Penn State and the University of Illinois at Chicago. John's specific areas of interest include scripted data assessment and visualization.